

Supraśl and Tykocin: meeting cultures in Podlachia's heritage





Podlasie, 17th c.



joszcz • tel.: 0048 52 3251 222; fax: 0048 52 3251 223 • www.arcus.org.pl • e-mail: biuro@arcus.org.pl





The Polish Orient





Kruszyniany, 18th c.
mosque on the Tatar Trail



Bohoniki, the largest Tatar's cemetery in Poland



„Lithuanian land” in Poland



Supraśl









Supraśl, Buchholtz Palace



Supraśl, Buchholtz chapel





Supraśl, Orthodox Monastery







Supraśl, reconstructed defensive church



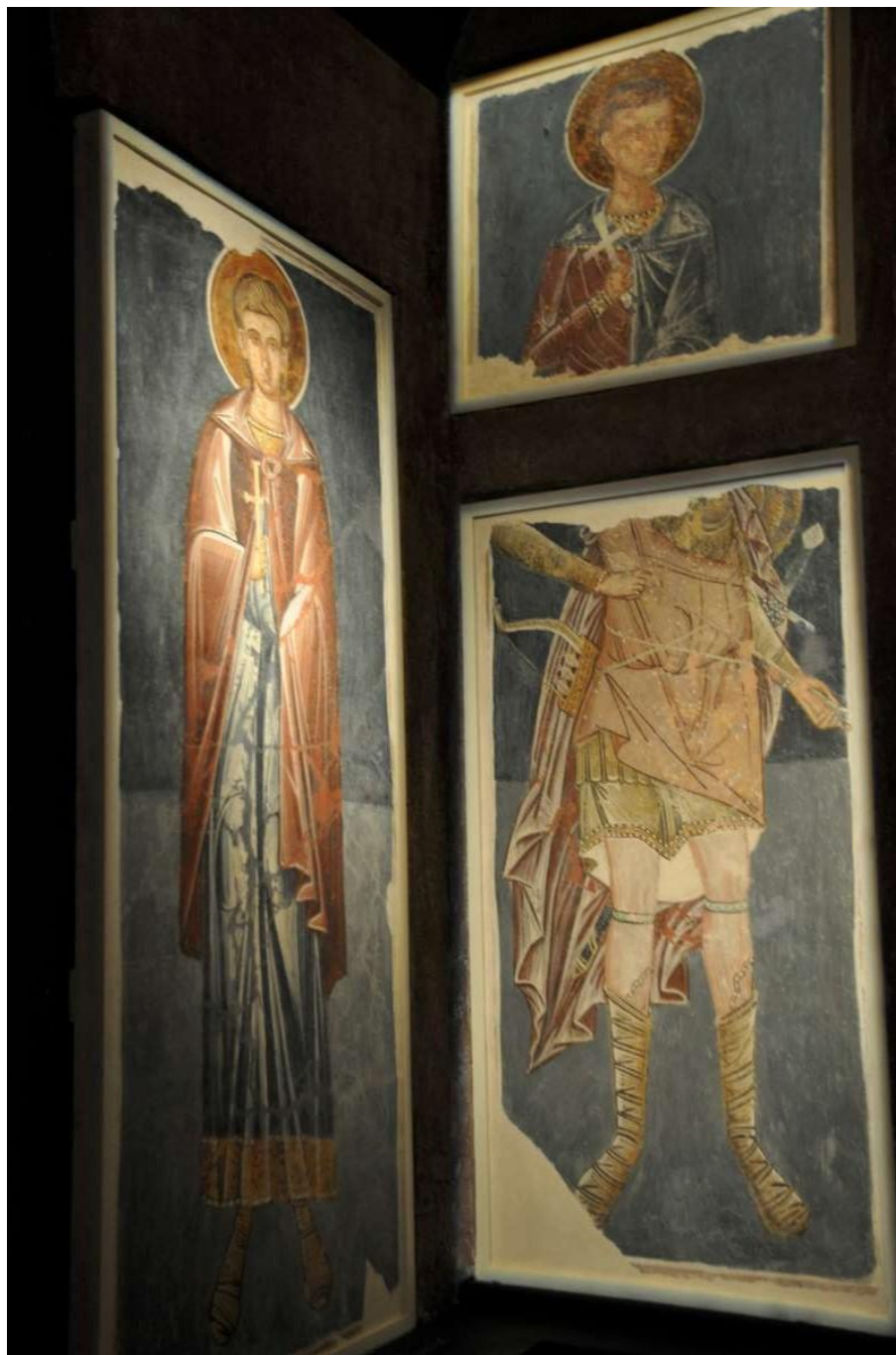
Supraśl, interior of the church



Museum of Icons



Remnants of frescos in Museum of Icons



Tykocin – a „pearl of the Baroque”









Tykocin, Holy Trinity Church (18th c.)





Tykocin, Great Synagogue (17th c.), after the Second World War



Tykocin, Great Synagogue

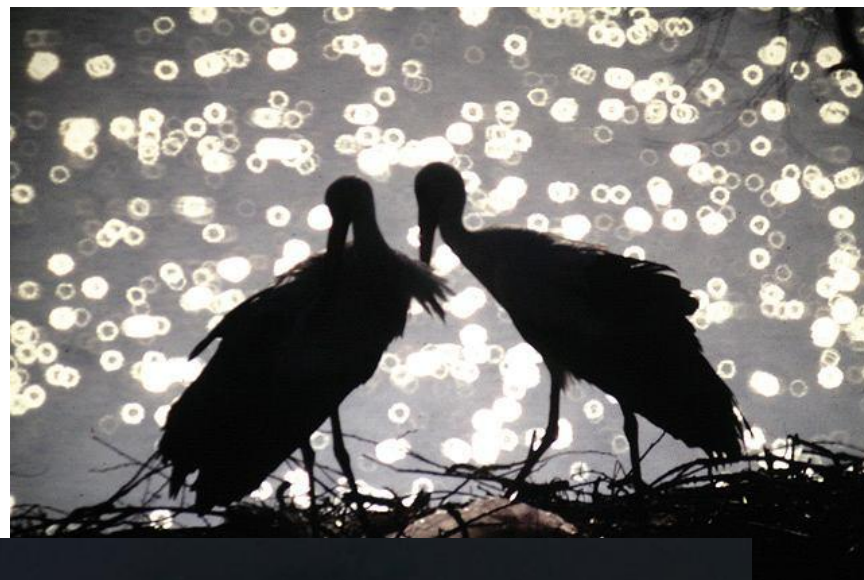
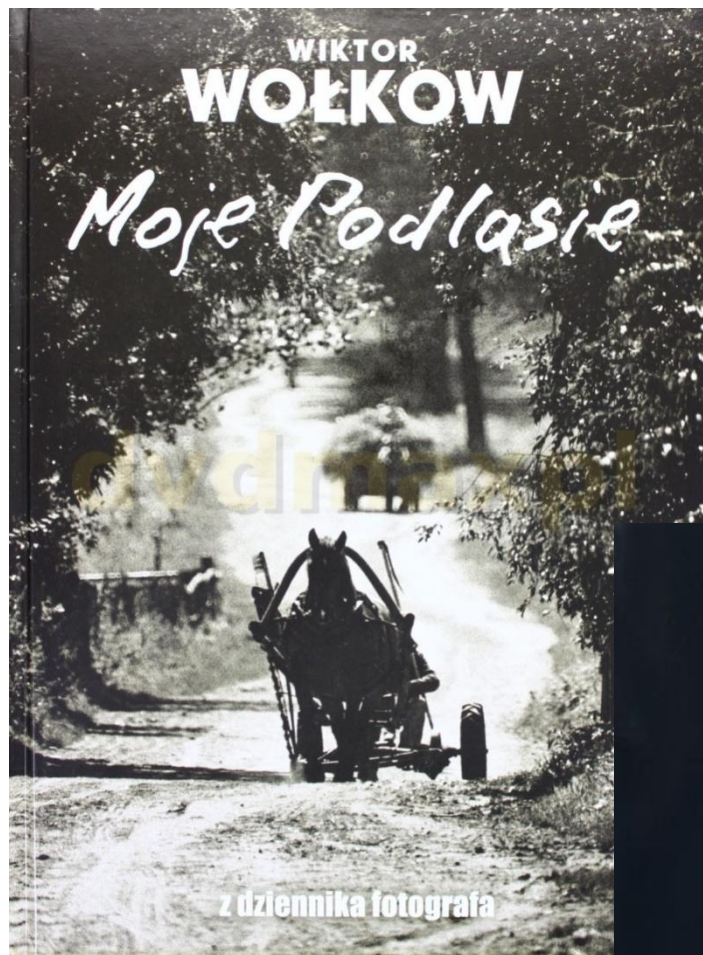


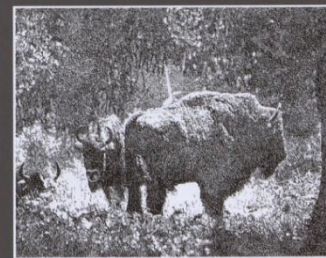












Stare jest piękne II

Architektura Przyroda

Województwa Podlaskiego

w rysunkach
Władysława Pietruka



Podlasie, traditional wooden architecture



The land of open shutters”







Local cuisine



tastesway.pl





Białowieża National Park, a UNESCO World Heritage Site (1979)



Leon Tarasewicz and his logo of Podlasie