

# OpenHeritage

Organizing, Promoting and Enabling Heritage Re-use through Inclusion, Technology, Access, Governance, and Empowerment  
Horizon2020 project, 2018–2022

## What is OpenHeritage?

**OpenHeritage works toward creating a sustainable management model of heritage assets.**

**It operates with an open definition of heritage, involving sites that are not listed or incorporated into the official heritage discourse. Rather, these buildings, complexes, and spaces have a symbolic or practical significance for local and trans-local communities.**

The model is based on the recognition that heritage preservation and management efforts are often inefficient and unsustainable without the integrated application of interdisciplinary knowledge, multi-stakeholder cooperation, and community involvement.

## What will we do?

The project will work on an inclusive governance and management model for adaptive heritage re-use and a supportive toolbox that is applicable under various institutional circumstances.

The project's activities will rely on three main pillars:

**Community and stakeholders involvement** - The concepts of heritage community and participatory culture are applied, identifying various approaches, and ensuring sustainable involvement.

**Resource integration** - Innovative financial and business solutions are tested to overcome resource scarcity, and to encourage the financial involvement of local stakeholders.

**Regional embeddedness** - The re-use processes are part of broader territorial development initiatives. They consider the regional social, environmental, administrative, and economic contexts of the heritage sites.

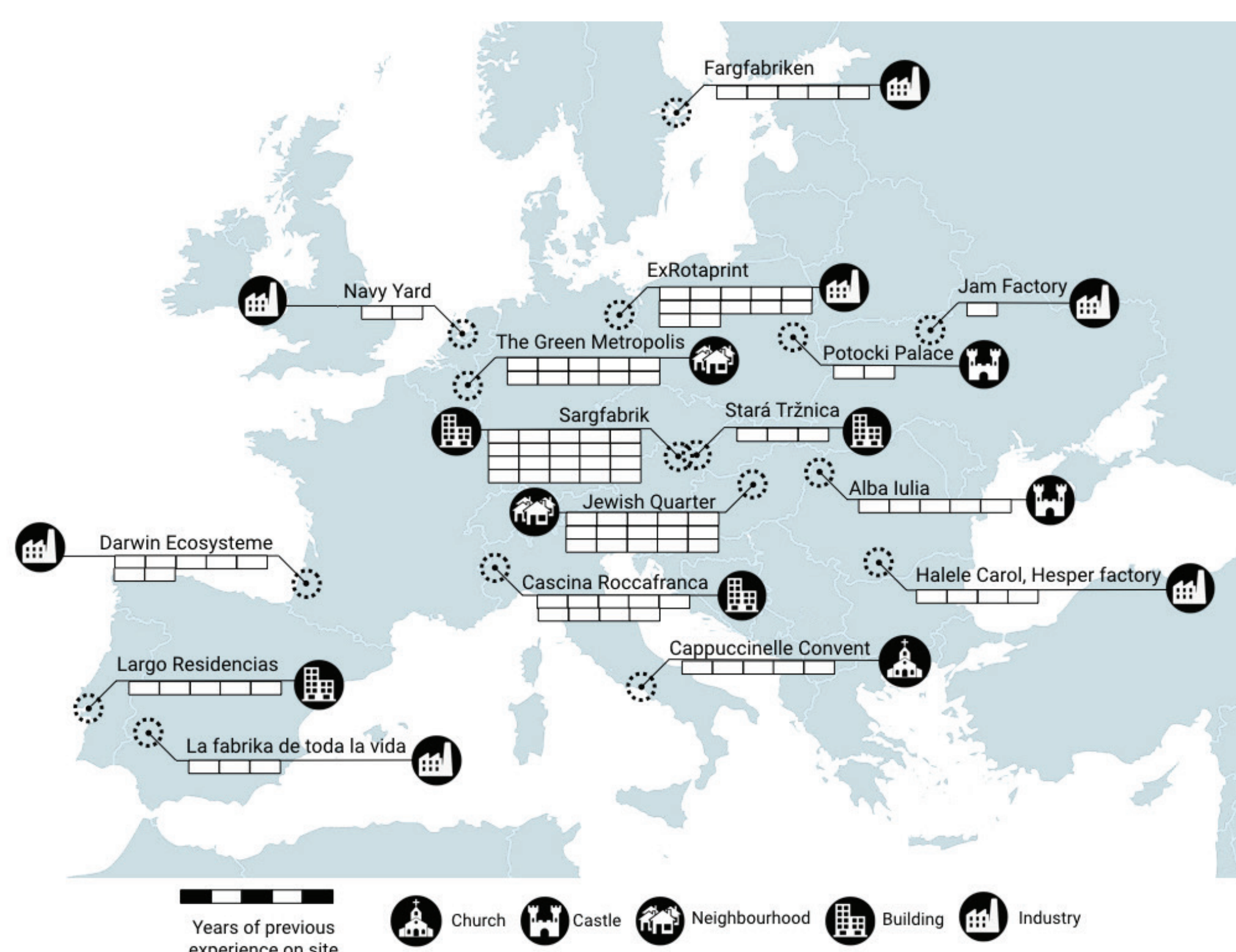
## How we will do it?

### Surveying

The project produces a macro-level overview and evaluation of current heritage re-use practices in Europe. The aim is to develop a state-of-the-art understanding and typology of the institutional and regulatory context, as well as of the funding and economic landscape of adaptive re-use practices.

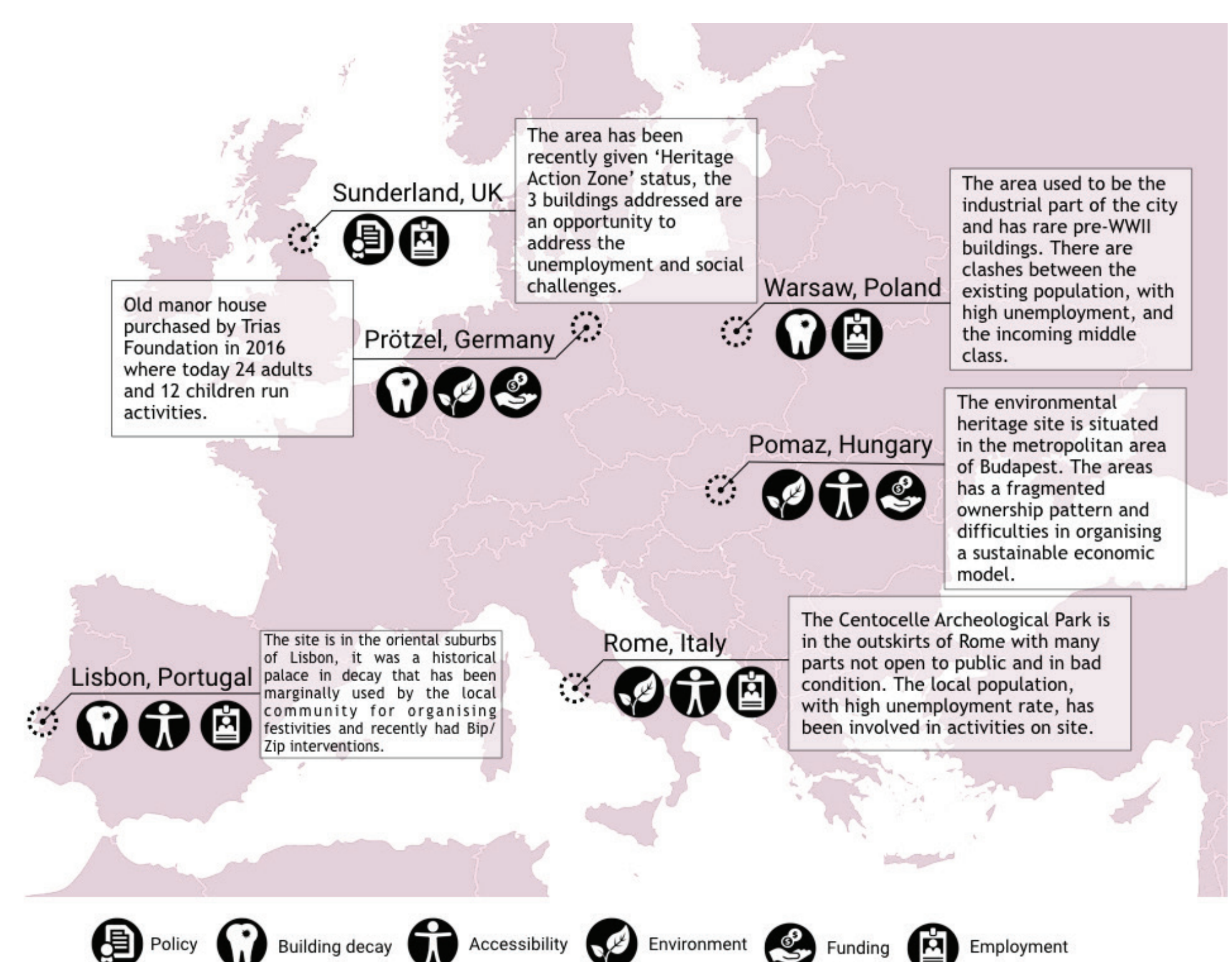
### Analysing

The sixteen Observatory Cases are good practices of adaptive re-use projects that will be studied and compared in-depth. They are innovative in terms of their community and stakeholder involvement, financial management, as well as their regional embeddedness. The selected sites vary in their original function (industrial, ecclesiastical, royal, administrative, military, residential, etc.), and they are dispersed all over Europe. The work done at the sites will be documented in written reports, video footages, and podcasts made accessible to a wider public.



### Testing

The six Cooperative Heritage Labs are experimental sites where OpenHeritage tests tools and practices to promote the sustainable re-use of heritage assets. Each CHL is of important heritage value, but in need of an appropriate function, facing diverse problems of economic, social and environmental nature. Work in the CHLs promotes engaging citizens into the discussion about the future of the heritage assets, helping them understand and redefine the heritage value, and involving them into the long-term operation of the sites. A multi-purpose website will provide a forum for the activities, and serve as a surface for crowdfunding and crowdsourcing campaigns.



**The project works with 16 partners from 10 European countries, and involves a variety of actors, including urban researchers, historians, community developers, planners, architects, municipalities, business actors, and heritage preservation specialists.**

#### Authors of the poster:

Hanna Szemző (Metropolitan Research Institute, Budapest) | Andrea Tönkő (Metropolitan Research Institute, Budapest)  
Dóra Mérai (Cultural Heritage Studies Program, Central European University, Budapest)

#### Design:

Daniella Patti (Eutropian)  
Jorge Mosquera (Eutropian)